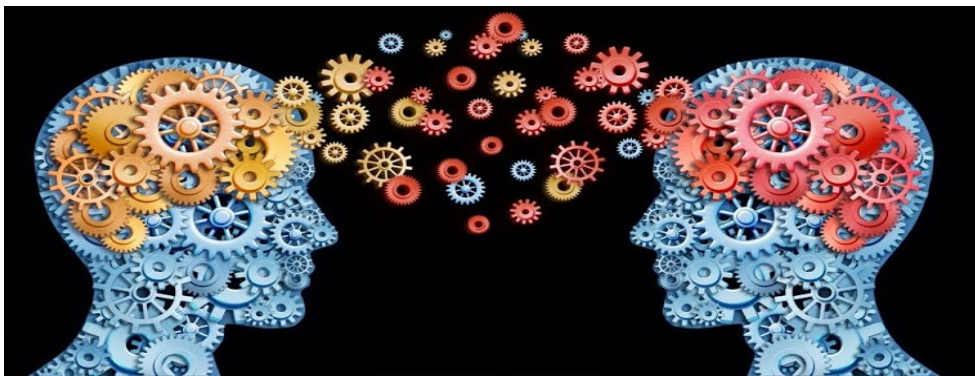


GCSE Psychology



Career Options

- Forensic Psychologists
- Law enforcement
- Counselling/therapist
- Legal profession
- Education sector (Teaching etc)
- Business
- Sport and exercise coach
- Neuroscientist
- Many more!

Subject Content

Criminal Psychology:

- Explanations of why criminal/anti-social behaviour occurs, including The Social Learning Theory of Criminality and Eysenck's Criminal Personality Theory
- The effects of punishment, alternatives to imprisonment, rehabilitation and reducing criminal/anti-social behaviour

Development:

- Stages of development including cognitive and brain development and the role of education and intelligence including Piaget's Theory of Cognitive Development
- Types of intelligence and how intelligence is measured

Psychological problems:

- Symptoms and diagnosis criteria of two mental health issues: Schizophrenia and Depression
- Psychological and biological explanations of treatments for Schizophrenia and Depression

Social influence:

- The impact of social groups, situations and other people on an individual's thoughts and behaviour,
- The impact of peer pressure and majority influence, including
- Obedience to authority, including the study of the situational factors that explain such behaviour

Memory:

- The structure and process of human memory, including features of short-term and long-term memory
- Inputs and outputs of human memory, and how different types of memory are encoded and stored

Sleep and dreaming:

- Functions, features and benefits of sleep, including internal and external influences on sleep, and the features and causes of sleep disorders
- The nature of dreaming including why and when dreaming occurs

Research methods:

- Planning to conduct a psychological investigation and writing a hypothesis including null and alternative
- Using, understanding, interpreting and analysing numerical data and graphical representation of data

Assessment Information

This course is exam based with no coursework. Students will sit **two papers** at the end of Year 11, both of which are **1 hour 30 minutes** per paper. The papers are outlined below:

Paper 1* (50% of overall GCSE)

- Criminal psychology
- Development
- Psychological problems
- Research methods (designing a research piece)

Paper 2* (50% of overall GCSE)

- Social influence
- Memory
- Sleep and dreaming
- Research methods (Q & A of a novel source)

A minimum of 10% of the overall marks across the two papers are targeted at the assessment of **mathematics relevant to research methods in Psychology*

Skills assessed:

- Demonstrate knowledge and understanding of psychological ideas
- Apply psychological knowledge and understanding in a range of contexts
- Analyse and evaluate psychological ideas
- Evaluate therapies and treatments
- Show how psychological knowledge and ideas change over time and how these inform our understanding of behaviour
- Demonstrate the contribution of psychology to an understanding of individual, social and cultural diversity
- Develop an understanding of the interrelationships between the core areas of psychology.

Please note: Students must have solid knowledge of Mathematics and Biology to study Psychology at GCSE. Students are also required to have a good standard of English writing as the exam consists of several extended writing pieces.

Why Study...?

Psychology is a fascinating area of study. It will help you understand human behaviour and mental processes and allow you to better understand how we think act and feel. If you are considering studying psychology, you probably already know what an interesting subject it is to study. Our psychology course looks at some of the important questions such as why do people act the way they do? What shapes our personality? How do we learn and change throughout our life? If you are interested in a deeper understanding of the human condition, you should consider studying psychology.

Key Contact: Miss Booth